



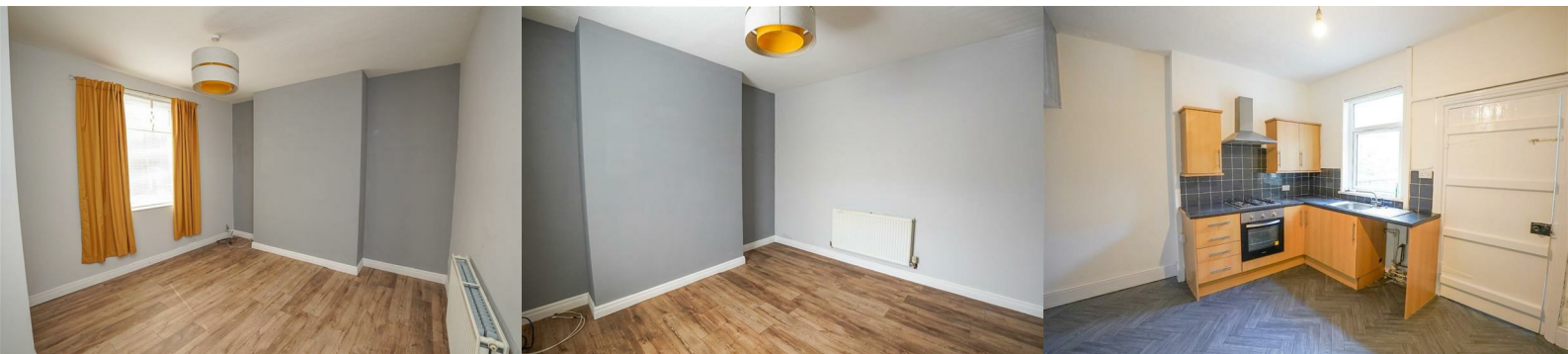
11 Ratcliffe Street

Springfield, Wigan, WN6 7LT

£775 PCM



Sapphire Homes are in a position to offer For Rent this wonderfully presented three bedroom mid terrace close to Wigan town centre and in popular residential location close to schools and local amenities. The property comprises entrance / vestibule leading to good sized lounge and to the rear there is a fitted kitchen / dining room and an inner hallway which provides access to a family bathroom with 3 piece bathroom suite in white with shower over bath. To the first floor the landing provides access to three good sized bedrooms. The property is warmed by Gas Central Heating and also benefits from double glazing and a modern tasteful decor. Externally the property is elevated but pavement fronted and there is on street parking and to the rear there is a low maintenance patio garden with rear gated access. The property is ideally suited for a couple or family and early internal viewing is highly recommended. No Smoking.



GROUND FLOOR

Entrance / Vestibule

Lounge

Kitchen / Diner

Bathroom

FIRST FLOOR

Landing

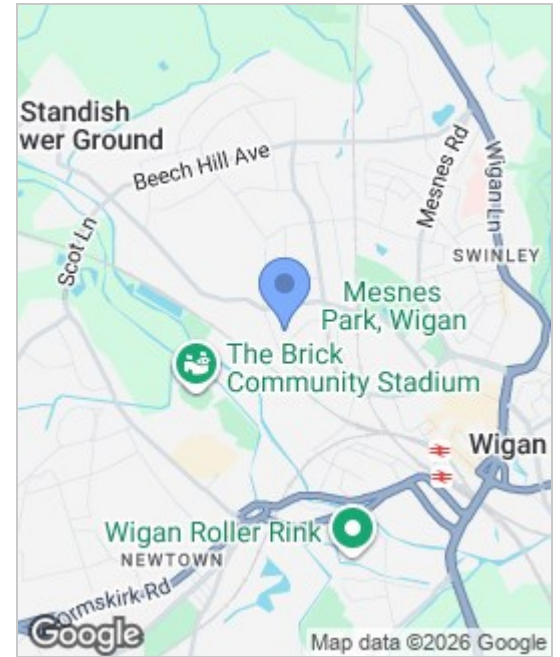
Master Bedroom

Bedroom 2

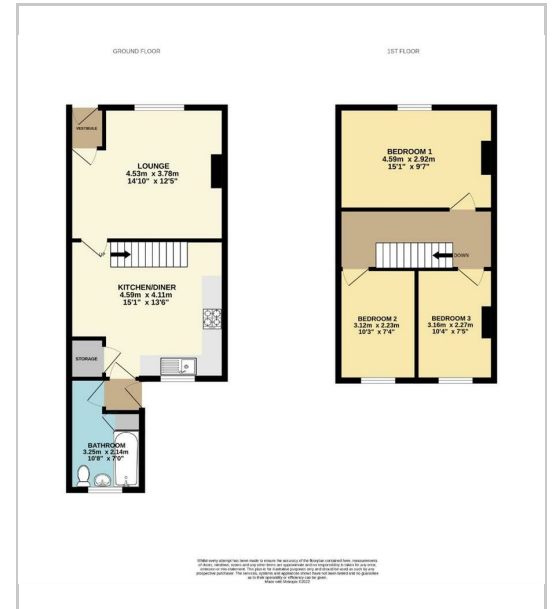
Bedroom 3

EXTERNAL

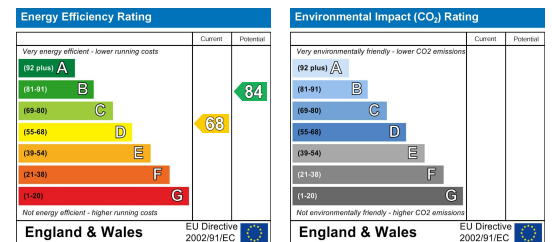
Area Map



Floor Plans



Energy Efficiency Graph



These particulars, whilst believed to be accurate are set out as a general outline only for guidance and do not constitute any part of an offer or contract. Intending purchasers should not rely on the representation of fact, but must satisfy themselves by inspection or otherwise as to their accuracy. No person in this firm's employment has the authority to make or give any representation or warranty in relation to the property.



Sapphire Homes (North) Ltd 80 Market Street, Wigan WNI 1HX
 T 01942 494944 E info@sapphirehomes.co.uk W www.sapphirehomes.co.uk VAT 183 759 366

specialists in sales, Lettings & Property Investments